

ALABAMA COMMISSION ON  
HIGHER EDUCATION



FALL 2013 FACILITIES INVENTORY AND  
SPACE BY CATEGORY REPORT

Facilities Inventory and Space by Category Data  
Alabama Public Colleges and Universities  
Fall 2013

Gross Building Area By Category (GSF)  
Net Assignable Space By Use (NASF) Part 1  
Net Assignable Space By Use (NASF) Part 2  
Net Assignable Space By Use (NASF) Chart  
Physical Plant By Year of Construction  
Physical Plant By Year of Construction Chart  
Condition of Buildings  
Condition of Buildings Chart  
Land Inventory

Gross Building Area By Category (GSF)  
Alabama Public Colleges and Universities  
Fall 2013

Institution	Gross Building Area						Percent of Total						2011 Total GSF	Percent Change
	E&G GSF	Health GSF	Hospital GSF	AUX GSF	Other GSF	Total GSF	E&G GSF	Health GSF	Hospital GSF	AUX GSF	Other GSF	Total GSF		
Alabama A&M University	1,157,173			876,889	184,215	2,218,277	52.2%			39.5%	8.3%	100.0%	2,217,950	0.0%
Alabama State University	1,432,342			1,168,601	94,297	2,695,240	53.1%			43.4%	3.5%	100.0%	2,283,036	18.1%
Athens State University	310,501			38,748	39,840	389,089	79.8%			10.0%	10.2%	100.0%	394,489	-1.4%
Auburn University	6,166,262	136,932		2,568,674		8,871,868	69.5%	1.5%		29.0%		100.0%	8,511,871	4.2%
AU-Vet Med	47,241	427,025	83,818	1,048		559,132	8.4%	76.4%	15.0%	0.2%		100.0%	552,115	1.3%
AU-AAES/ACES	494				861,568	862,062	0.1%				99.9%	100.0%	867,691	-0.6%
Auburn University at Montgomery	690,834			235,663	14,365	940,862	73.4%			25.0%	1.5%	100.0%	865,342	8.7%
Jacksonville State University	1,463,988			777,986	124,026	2,366,000	61.9%			32.9%	5.2%	100.0%	2,364,153	0.1%
Troy University	1,532,275			1,464,482	17,010	3,013,767	50.8%			48.6%	0.6%	100.0%	2,661,059	13.3%
University of Alabama	5,527,108	92,785		6,755,096	61,420	12,436,409	44.4%	0.7%		54.3%	0.5%	100.0%	11,775,368	5.6%
University of Alabama at Birmingham	3,066,471	1,357,473		3,822,925	797,962	9,044,831	33.9%	15.0%		42.3%	8.8%	100.0%	8,385,820	7.9%
UAB-Health		3,116,320	3,831,731			6,948,051		44.9%	55.1%			100.0%	7,380,196	-5.9%
University of Alabama in Huntsville	1,703,908			986,103	182,201	2,872,212	59.3%			34.3%	6.3%	100.0%	2,865,549	0.2%
University of Montevallo	679,593			463,492	14,324	1,157,409	58.7%			40.0%	1.2%	100.0%	1,170,259	-1.1%
University of North Alabama	1,237,925	15,379		502,064	37,620	1,792,988	69.0%	0.9%		28.0%	2.1%	100.0%	1,810,817	-1.0%
University of South Alabama	2,528,894			1,206,105	35,035	3,770,034	67.1%			32.0%	0.9%	100.0%	3,434,472	9.8%
USA-Health		733,059	838,272	2,664	96,485	1,670,480		43.9%	50.2%	0.2%	5.8%	100.0%	1,810,740	-7.7%
University of West Alabama	633,390			424,433		1,057,823	59.9%			40.1%		100.0%	806,852	31.1%
<b>Total Senior Institutions</b>	<b>28,178,399</b>	<b>5,878,973</b>	<b>4,753,821</b>	<b>21,294,973</b>	<b>2,560,368</b>	<b>62,666,534</b>	<b>45.0%</b>	<b>9.4%</b>	<b>7.6%</b>	<b>34.0%</b>	<b>4.1%</b>	<b>100.0%</b>	<b>60,157,779</b>	<b>4.2%</b>
Dauphin Island Sealab/MESC	137,934			16,360		154,294	89.4%			10.6%		100.0%	153,194	0.7%
Alabama Southern Comm College	300,166			3,534		303,700	98.8%			1.2%		100.0%	303,700	
Bevill State Community College	650,658			165,087	22,573	838,318	77.6%			19.7%	2.7%	100.0%	838,318	
Bishop State Community College	568,567			21,237		589,804	96.4%			3.6%		100.0%	593,480	-0.6%
Calhoun Community College	770,574				28,747	799,321	96.4%				3.6%	100.0%	764,765	4.5%
Central Alabama Community College	333,444			41,462	63,092	437,998	76.1%			9.5%	14.4%	100.0%	437,998	
Chattahoochee Valley Comm College	185,820					185,820	100.0%					100.0%	185,820	
Drake State Community & Technical Coll	153,553					153,553	100.0%					100.0%	169,553	-9.4%
Enterprise State Community College	397,287			3,787	38,319	439,393	90.4%			0.9%	8.7%	100.0%	397,863	10.4%
Faulkner State Community College	341,971			152,318	11,880	506,169	67.6%			30.1%	2.3%	100.0%	455,887	11.0%
Gadsden State Community College	884,097			66,722	90,537	1,041,356	84.9%			6.4%	8.7%	100.0%	1,040,636	0.1%
Ingram State Technical College	165,631				896	166,527	99.5%				0.5%	100.0%	159,222	4.6%
Jefferson Davis Community College	238,655			29,982	13,281	281,918	84.7%			10.6%	4.7%	100.0%	281,837	0.0%
Jefferson State Community College	808,458			6,100	102,698	917,256	88.1%			0.7%	11.2%	100.0%	918,992	-0.2%
Lawson State Community College	610,015			52,981	11,172	674,168	90.5%			7.9%	1.7%	100.0%	664,118	1.5%
L. B. Wallace Community College	293,899				2,848	296,747	99.0%				1.0%	100.0%	296,747	
Marion Military Institute	236,929			110,835		347,764	68.1%			31.9%		100.0%	346,690	0.3%
Northeast Alabama Comm College	339,333			5,913	9,198	354,444	95.7%			1.7%	2.6%	100.0%	354,444	
Northwest-Shoals Community College	469,616			25,858		495,474	94.8%			5.2%		100.0%	484,029	2.4%
Reid State Technical College	125,920			3,600		129,520	97.2%			2.8%		100.0%	128,968	0.4%
Shelton State Community College	642,546			20,356	10,680	673,582	95.4%			3.0%	1.6%	100.0%	725,831	-7.2%
Snead State Community College	257,911			33,751	11,463	303,125	85.1%			11.1%	3.8%	100.0%	300,925	0.7%
Southern Union State Comm College	549,478			84,681		634,159	86.6%			13.4%		100.0%	664,796	-4.6%
Trenholm State Technical College	226,141			4,168	30,557	260,866	86.7%			1.6%	11.7%	100.0%	263,022	-0.8%
Wallace Community College Dothan	527,019			16,643		543,662	96.9%			3.1%		100.0%	511,021	6.4%
Wallace Community College Hanceville	839,692			91,596		931,288	90.2%			9.8%		100.0%	931,400	0.0%
Wallace Community College Selma	311,936			4,039	15,130	331,105	94.2%			1.2%	4.6%	100.0%	293,274	12.9%
<b>Total Two-Year Institutions</b>	<b>11,229,316</b>			<b>944,650</b>	<b>463,071</b>	<b>12,637,037</b>	<b>88.9%</b>			<b>7.5%</b>	<b>3.7%</b>	<b>100.0%</b>	<b>12,513,336</b>	<b>1.0%</b>
<b>Total All Public Institutions</b>	<b>39,545,649</b>	<b>5,878,973</b>	<b>4,753,821</b>	<b>22,255,983</b>	<b>3,023,439</b>	<b>75,457,865</b>	<b>52.4%</b>	<b>7.8%</b>	<b>6.3%</b>	<b>29.5%</b>	<b>4.0%</b>	<b>100.0%</b>	<b>72,824,309</b>	<b>3.6%</b>

Source: Alabama Commission on Higher Education's Fall 2013 Facilities Inventory survey.

Net Assignable Space By Use (NASF)  
Alabama Public Colleges and Universities  
Fall 2013

Institution	Fall 2013 FTE	Classrooms & Service		Class Labs & Service		Open Laboratories & Service		Research Labs & Service		Office		Study		Special Use	
		NASF	NASF/ FTE	NASF	NASF/ FTE	NASF	NASF/ FTE	NASF	NASF/ FTE	NASF	NASF/ FTE	NASF	NASF/ FTE	NASF	NASF/ FTE
Alabama A&M University	4,498	123,759	27.51	84,737	18.84	17,574	3.91	70,847	15.75	220,169	48.95	38,590	8.58	225,832	50.21
Alabama State University	5,819	136,950	23.53	90,126	15.49	27,927	4.80	2,843	0.49	209,128	35.94	19,460	3.34	217,560	37.39
Athens State University	2,005	23,799	11.87	11,310	5.64	1,825	0.91			53,221	26.54	23,335	11.64	84,372	42.08
Auburn University (a)	22,266	298,803	13.42	304,632	13.68	130,177	5.85	657,074	29.51	1,319,538	59.26	297,594	13.37	769,872	34.58
Auburn University at Montgomery	3,804	59,683	15.69	36,452	9.58			1,828	0.48	124,004	32.60	51,627	13.57	57,385	15.09
Jacksonville State University	6,691	264,330	39.51	97,441	14.56	20,401	3.05	5,504	0.82	254,818	38.08	119,800	17.90	125,890	18.81
Troy University	9,904	225,740	22.79	62,644	6.33	3,572	0.36	1,337	0.13	429,857	43.40	72,818	7.35	228,113	23.03
University of Alabama	30,200	348,886	11.55	202,324	6.70	120,343	3.98	349,004	11.56	1,330,925	44.07	304,246	10.07	1,027,164	34.01
University of Alabama at Birmingham (b)	14,740	203,201	13.79	142,704	9.68	928,314	62.98	182,729	12.40	2,207,216	149.74	188,163	12.77	370,106	25.11
University of Alabama in Huntsville	5,483	118,197	21.56	134,427	24.52	29,545	5.39	229,349	41.83	444,278	81.03	64,803	11.82	117,503	21.43
University of Montevallo	2,643	57,345	21.70	28,978	10.96	38,252	14.47			93,862	35.51	48,353	18.29	152,758	57.80
University of North Alabama	5,342	111,450	20.86	61,364	11.49	27,294	5.11	4,216	0.79	171,453	32.10	51,758	9.69	86,709	16.23
University of South Alabama (c)	12,659	192,579	15.21	179,787	14.20	30,379	2.40	191,013	15.09	731,954	57.82	162,039	12.80	483,504	38.19
University of West Alabama	2,864	58,833	20.54	69,401	24.23			1,604	0.56	68,895	24.06	34,111	11.91	50,021	17.47
<b>Total Senior Institutions</b>	<b>128,918</b>	<b>2,223,555</b>	<b>17.25</b>	<b>1,506,327</b>	<b>11.68</b>	<b>1,375,603</b>	<b>10.67</b>	<b>1,697,348</b>	<b>13.17</b>	<b>7,659,318</b>	<b>59.41</b>	<b>1,476,697</b>	<b>11.45</b>	<b>3,996,789</b>	<b>31.00</b>
Alabama Southern Comm College	1,029	34,946	33.96	56,602	55.01	9,800	9.52			28,130	27.34	8,716	8.47	11,122	10.81
Bevill State Community College	2,414	150,976	62.54	158,299	65.58	7,156	2.96			80,626	33.40	31,991	13.25	116,321	48.19
Bishop State Community College	2,560	37,666	14.71	181,066	70.73					61,756	24.12	23,234	9.08	95,439	37.28
Calhoun Community College	6,746	373,291	55.34	40,541	6.01					97,200	14.41	23,243	3.45	4,646	0.69
Central Alabama Community College	1,201	85,275	71.00	51,873	43.19	10,367	8.63			41,206	34.31	41,061	34.19	30,563	25.45
Chattahoochee Valley Comm College	1,281	38,981	30.43	19,416	15.16					24,087	18.80	25,140	19.63	29,462	23.00
Drake State Community & Technical Coll	830	29,949	36.08	48,710	58.69					20,092	24.21	4,546	5.48	15,848	19.09
Enterprise State Community College	1,679	86,227	51.36	97,789	58.24	25,281	15.06			29,971	17.85	19,829	11.81	29,135	17.35
Faulkner State Community College	3,211	70,090	21.83	59,008	18.38	5,513	1.72			54,084	16.84	1,439	0.45	27,158	8.46
Gadsden State Community College	3,972	154,010	38.77	194,703	49.02	36,708	9.24	2,533	0.64	108,895	27.42	42,745	10.76	76,400	19.23
Ingram State Technical College	439	40,795	92.93	82,224	187.30					11,703	26.66	578	1.32	1,705	3.88
Jefferson Davis Community College	793	34,766	43.84	73,993	93.31					21,150	26.67	8,849	11.16	19,044	24.02
Jefferson State Community College	4,826	148,550	30.78	114,217	23.67	9,153	1.90	437	0.09	102,860	21.31	36,193	7.50	66,705	13.82
Lawson State Community College	2,166	88,798	41.00	174,455	80.54	5,420	2.50			56,342	26.01	11,657	5.38	59,619	27.52
L. B. Wallace Community College	1,120	48,265	43.09	72,298	64.55	1,575	1.41			27,662	24.70	6,873	6.14	14,464	12.91
Marion Military Institute	457	30,298	66.30	4,260	9.32					25,832	56.53	17,800	38.95	15,504	33.93
Northeast Alabama Comm College	1,864	45,837	24.59	52,537	28.19	1,670	0.90			38,448	20.63	16,414	8.81	21,431	11.50
Northwest-Shoals Community College	2,419	58,368	24.13	127,491	52.70					36,700	15.17	12,115	5.01	57,998	23.98
Reid State Technical College	345	20,308	58.86	33,294	96.50					11,114	32.21	11,070	32.09	1,536	4.45
Shelton State Community College	3,383	91,262	26.98	143,458	42.41					75,911	22.44	15,627	4.62	41,106	12.15
Snead State Community College	1,828	35,502	19.42	18,940	10.36	2,632	1.44			33,666	18.42	8,292	4.54	22,336	12.22
Southern Union State Comm College	3,451	85,865	24.88	84,305	24.43	2,096	0.61			55,439	16.06	20,515	5.94	49,813	14.43
Trenholm State Technical College	903	37,706	41.76	98,119	108.66					32,577	36.08	2,238	2.48	1,000	1.11
Wallace Community College Dothan	3,054	105,869	34.67	142,461	46.65					52,797	17.29	2,886	0.94	18,541	6.07
Wallace Community College Hanceville	3,824	116,161	30.38	128,095	33.50	12,788	3.34	6,250	1.63	78,250	20.46	24,384	6.38	98,593	25.78
Wallace Community College Selma	1,258	71,286	56.67			39,141	31.11			66,742	53.05	2,836	2.25	49,872	39.64
<b>Total Two-Year Institutions</b>	<b>57,053</b>	<b>2,121,047</b>	<b>37.18</b>	<b>2,258,154</b>	<b>39.58</b>	<b>169,300</b>	<b>2.97</b>	<b>9,220</b>	<b>0.16</b>	<b>1,273,240</b>	<b>22.32</b>	<b>420,271</b>	<b>7.37</b>	<b>975,361</b>	<b>17.10</b>
<b>Total All Public Institutions</b>	<b>185,971</b>	<b>4,344,602</b>	<b>23.36</b>	<b>3,764,481</b>	<b>20.24</b>	<b>1,544,903</b>	<b>8.31</b>	<b>1,706,568</b>	<b>9.18</b>	<b>8,932,558</b>	<b>48.03</b>	<b>1,896,968</b>	<b>10.20</b>	<b>4,972,150</b>	<b>26.74</b>

Notes: (a) Auburn University line includes net building area associated with Veterinary Medicine, AAES, and ACES.  
(b) University of Alabama at Birmingham line includes net building area associated with Professional Health and Hospital.  
(c) University of South Alabama line includes net building area associated with Professional Health and Hospital and the Baldwin campus.

Source: Alabama Commission on Higher Education's Fall 2013 Facilities Inventory and Space by Category surveys, Fall Credit Hour Production reports, and the Alabama College System's Enrollment Summary.

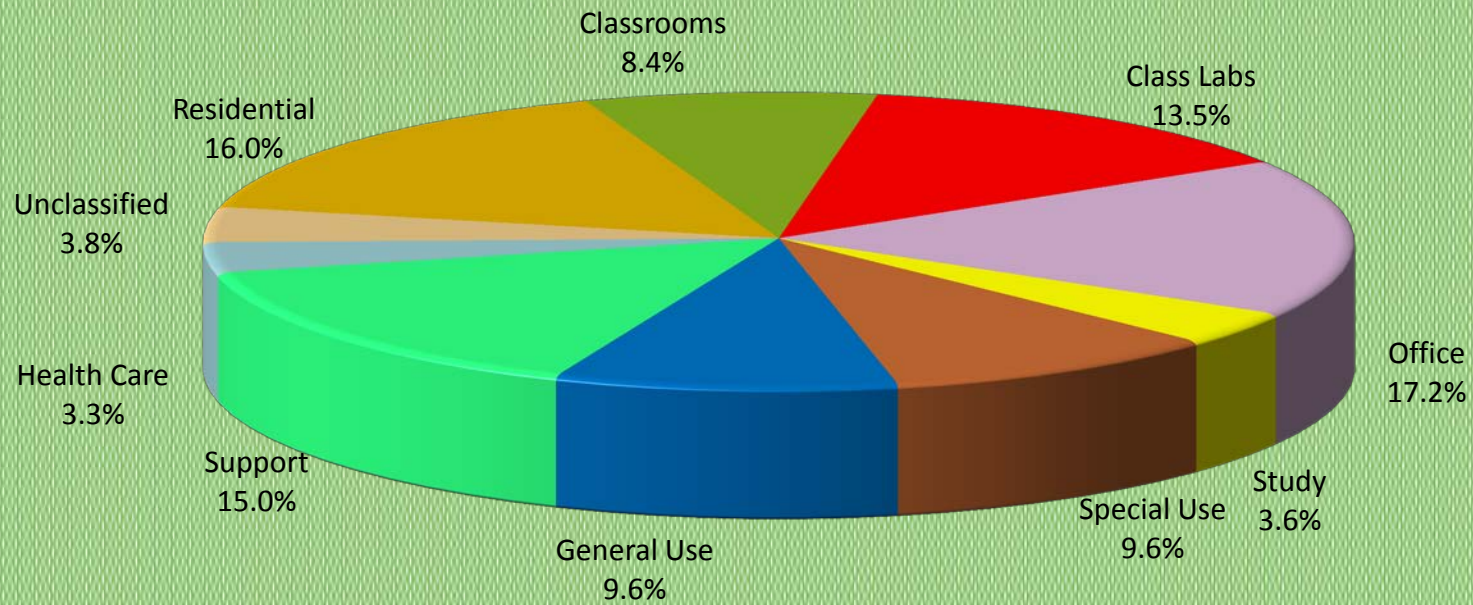
Net Assignable Space By Use (NASF)  
Alabama Public Colleges and Universities  
Fall 2013

Institution	Fall 2013 FTE	General Use		Support		Health Care		Unclassified		Total Non-Residential		Total Residential		Total All Space	
		NASF	NASF/ FTE	NASF	NASF/ FTE	NASF	NASF/ FTE	NASF	NASF/ FTE	NASF	NASF/ FTE	NASF	NASF/ FTE	NASF	NASF/ FTE
Alabama A&M University	4,498	190,677	42.39	62,899	13.98	4,000	0.89	33,710	7.49	1,072,794	238.50	488,015	108.50	1,560,809	347.00
Alabama State University	5,819	651,658	111.99	57,525	9.89	3,015	0.52	177,291	30.47	1,593,483	273.84	387,290	66.56	1,980,773	340.40
Athens State University	2,005	31,292	15.61	15,988	7.97			16,483	8.22	261,625	130.49	8,059	4.02	269,684	134.51
Auburn University (a)	22,266	402,500	18.08	665,118	29.87	110,339	4.96	663,089	29.78	5,618,736	252.35	942,409	42.33	6,561,145	294.67
Auburn University at Montgomery	3,804	140,414	36.91	61,055	16.05	1,157	0.30			533,605	140.27	154,087	40.51	687,692	180.78
Jacksonville State University	6,691	166,768	24.92	48,155	7.20	4,300	0.64	40,689	6.08	1,148,096	171.59	515,558	77.05	1,663,654	248.64
Troy University	9,904	250,482	25.29	166,272	16.79	4,167	0.42	457,328	46.18	1,902,330	192.08	614,386	62.03	2,516,716	254.11
University of Alabama	30,200	641,740	21.25	1,733,625	57.40	58,199	1.93	30,874	1.02	6,147,330	203.55	2,444,675	80.95	8,592,005	284.50
University of Alabama at Birmingham (b)	14,740	561,179	38.07	3,658,840	248.23	1,121,509	76.09	167,336	11.35	9,731,297	660.20	672,322	45.61	10,403,619	705.81
University of Alabama in Huntsville	5,483	95,637	17.44	106,072	19.35	724	0.13			1,340,535	244.49	445,080	81.17	1,785,615	325.66
University of Montevallo	2,643	112,006	42.38	51,481	19.48			13,437	5.08	596,472	225.68	211,556	80.04	808,028	305.72
University of North Alabama	5,342	167,437	31.34	321,222	60.13	2,653	0.50	771	0.14	1,006,327	188.38	279,613	52.34	1,285,940	240.72
University of South Alabama (c)	12,659	275,884	21.79	187,904	14.84	398,678	31.49	121,216	9.58	2,954,937	233.43	491,527	38.83	3,446,464	272.25
University of West Alabama	2,864	86,695	30.27	62,678	21.88			69,424	24.24	501,662	175.16	236,473	82.57	738,135	257.73
<b>Total Senior Institutions</b>	<b>128,918</b>	<b>3,774,369</b>	<b>29.28</b>	<b>7,198,834</b>	<b>55.84</b>	<b>1,708,741</b>	<b>13.25</b>	<b>1,791,648</b>	<b>13.90</b>	<b>34,409,229</b>	<b>266.91</b>	<b>7,891,050</b>	<b>61.21</b>	<b>42,300,279</b>	<b>328.12</b>
Alabama Southern Comm College	1,029	20,440	19.86	18,213	17.70			38,397	37.31	226,366	219.99			226,366	219.99
Bevill State Community College	2,414	77,570	32.13	10,391	4.30					633,330	262.36	42,738	17.70	676,068	280.06
Bishop State Community College	2,560	61,129	23.88	58,182	22.73	205	0.08	3,565	1.39	522,242	204.00			522,242	204.00
Calhoun Community College	6,746	92,605	13.73	16,108	2.39					647,634	96.00			647,634	96.00
Central Alabama Community College	1,201	27,413	22.83	47,039	39.17			6,796	5.66	341,593	284.42			341,593	284.42
Chattahoochee Valley Comm College	1,281	11,296	8.82							148,382	115.83			148,382	115.83
Drake State Community & Technical Coll	830	7,041	8.48							126,186	152.03			126,186	152.03
Enterprise State Community College	1,679	26,456	15.76	3,209	1.91			35,000	20.85	352,897	210.18			352,897	210.18
Faulkner State Community College	3,211	49,678	15.47	13,214	4.12					280,184	87.26	92,260	28.73	372,444	115.99
Gadsden State Community College	3,972	71,720	18.06	64,613	16.27	1,158	0.29			753,485	189.70	25,603	6.45	779,088	196.15
Ingram State Technical College	439	3,167	7.21	6,660	15.17					146,832	334.47			146,832	334.47
Jefferson Davis Community College	793	23,228	29.29	19,186	24.19			224	0.28	200,440	252.76	31,264	39.42	231,704	292.19
Jefferson State Community College	4,826	111,619	23.13	28,139	5.83			7,344	1.52	625,217	129.55			625,217	129.55
Lawson State Community College	2,166	46,243	21.35	28,643	13.22			27,445	12.67	498,622	230.20	18,063	8.34	516,685	238.54
L. B. Wallace Community College	1,120	40,078	35.78	18,850	16.83			8,074	7.21	238,139	212.62			238,139	212.62
Marion Military Institute	457	70,265	153.75	1,867	4.09			1,450	3.17	167,276	366.03	109,785	240.23	277,061	606.26
Northeast Alabama Comm College	1,864	37,231	19.97	11,378	6.10			2,710	1.45	227,656	122.13			227,656	122.13
Northwest-Shoals Community College	2,419	60,965	25.20	33,148	13.70			48,349	19.99	435,134	179.88	9,655	3.99	444,789	183.87
Reid State Technical College	345	14,175	41.09	9,949	28.84					101,446	294.05			101,446	294.05
Shelton State Community College	3,383	24,225	7.16	29,813	8.81			4,000	1.18	425,402	125.75			425,402	125.75
Snead State Community College	1,828	82,448	45.10	5,591	3.06					209,407	114.56	20,410	11.17	229,817	125.72
Southern Union State Comm College	3,451	68,273	19.78	43,468	12.60					409,774	118.74	36,473	10.57	446,247	129.31
Trenholm State Technical College	903	11,262	12.47	32,904	36.44			5,374	5.95	221,180	244.94			221,180	244.94
Wallace Community College Dothan	3,054	29,334	9.61	60,584	19.84			1,393	0.46	413,865	135.52			413,865	135.52
Wallace Community College Hanceville	3,824	133,819	34.99	14,922	3.90					613,262	160.37	62,012	16.22	675,274	176.59
Wallace Community College Selma	1,258	25,541	20.30	7,377	5.86			14,945	11.88	277,740	220.78			277,740	220.78
<b>Total Two-Year Institutions</b>	<b>57,053</b>	<b>1,227,221</b>	<b>21.51</b>	<b>583,448</b>	<b>10.23</b>	<b>1,363</b>	<b>0.02</b>	<b>205,066</b>	<b>3.59</b>	<b>9,243,691</b>	<b>162.02</b>	<b>448,263</b>	<b>7.86</b>	<b>9,691,954</b>	<b>169.88</b>
<b>Total All Public Institutions</b>	<b>185,971</b>	<b>5,001,590</b>	<b>26.89</b>	<b>7,782,282</b>	<b>41.85</b>	<b>1,710,104</b>	<b>9.20</b>	<b>1,996,714</b>	<b>10.74</b>	<b>43,652,920</b>	<b>234.73</b>	<b>8,339,313</b>	<b>44.84</b>	<b>51,992,233</b>	<b>279.57</b>

Notes: (a) Auburn University line includes net building area associated with Veterinary Medicine, AAES, and ACES.  
(b) University of Alabama at Birmingham line includes net building area associated with Professional Health and Hospital.  
(c) University of South Alabama line includes net building area associated with Professional Health and Hospital and the Baldwin campus.

Source: Alabama Commission on Higher Education's Fall 2013 Facilities Inventory and Space by Category surveys, Fall Credit Hour Production reports, and the Alabama College System's Enrollment Summary.

# Net Assignable Space By Use Alabama Public Colleges and Universities Fall 2013



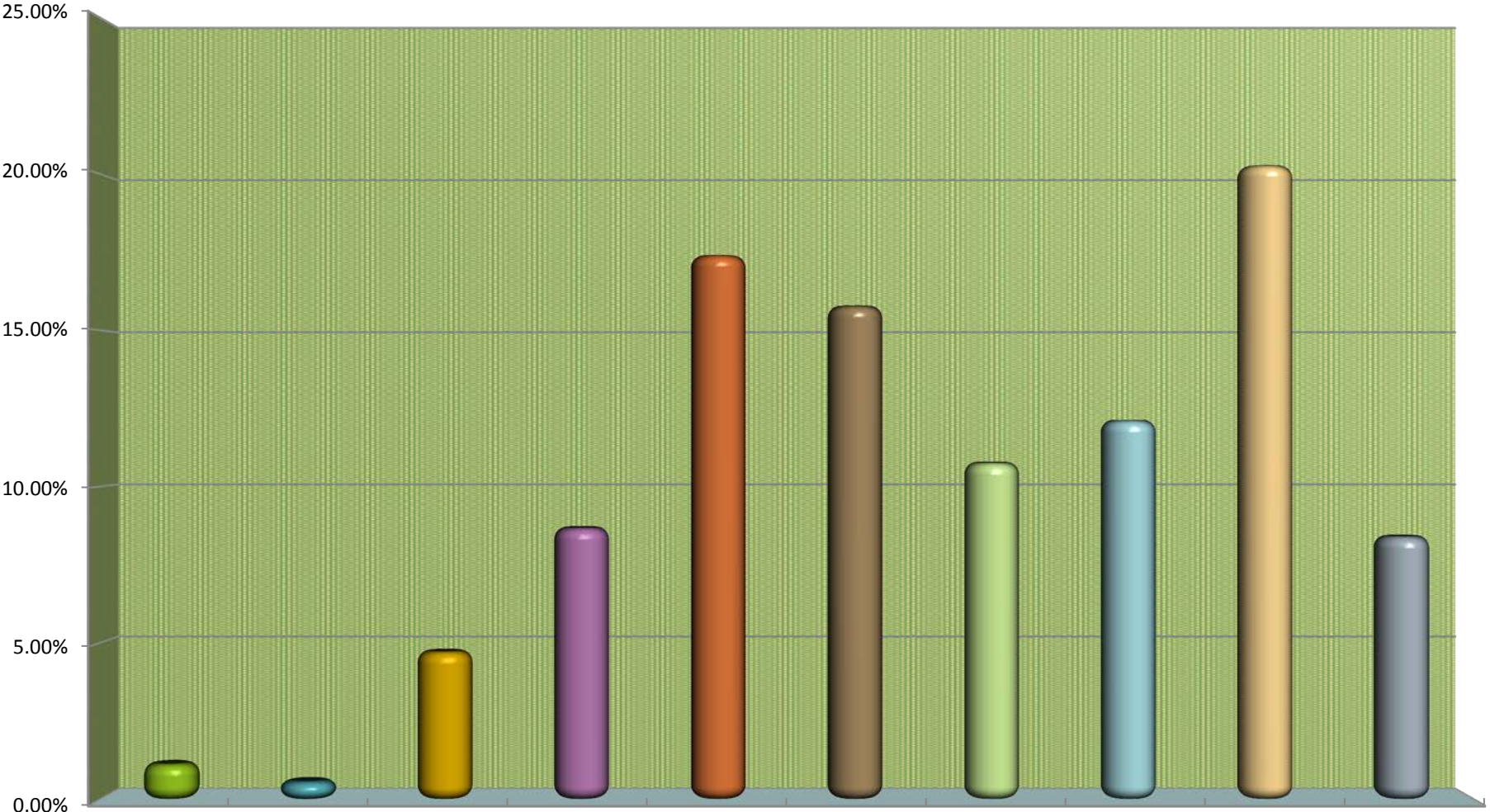
Source: Alabama Commission on Higher Education's Fall 2013 Space By Category survey.

Physical Plant By Year of Construction  
Alabama Public Colleges and Universities  
1819-2013  
Gross Square Feet (GSF)

Decade	Total Senior			Total Two-Year			Total Dauphin Island Sealab/MESC			Total All		
	Total GSF	Percent of Total	Cumulative Percent	Total GSF	Percent of Total	Cumulative Percent	Total GSF	Percent of Total	Cumulative Percent	Total GSF	Percent of Total	Cumulative Percent
Unknown	852,841	1.361%		11,068	0.088%					863,909	1.145%	
1810-1819	—	—	—	2,948	0.023%	0.111%				2,948	0.004%	1.149%
1820-1829	24,244	0.039%	1.400%	—	—	—				24,244	0.032%	1.181%
1830-1839	21,937	0.035%	1.435%	720	0.006%	0.117%				22,657	0.030%	1.211%
1840-1849	82,810	0.132%	1.567%	—	—	—				82,810	0.110%	1.321%
1850-1859	46,879	0.075%	1.642%	27,064	0.214%	0.331%				73,943	0.098%	1.419%
1860-1869	66,400	0.106%	1.748%	—	—	—				66,400	0.088%	1.507%
1870-1879	—	—	—	—	—	—				0	0.000%	1.507%
1880-1889	157,098	0.251%	1.998%	—	—	—				157,098	0.208%	1.715%
1890-1899	13,515	0.022%	2.020%	—	—	—				13,515	0.018%	1.733%
1900-1909	453,800	0.724%	2.744%	3,530	0.028%	0.359%				457,330	0.606%	2.339%
1910-1919	263,196	0.420%	3.164%	7,442	0.059%	0.418%				270,638	0.359%	2.698%
1920-1929	2,755,683	4.397%	7.561%	90,873	0.719%	1.137%				2,846,556	3.772%	6.470%
1930-1939	1,699,571	2.712%	10.273%	91,470	0.724%	1.861%				1,791,041	2.374%	8.843%
1940-1949	1,465,179	2.338%	12.611%	174,033	1.377%	3.238%	8,344	5.408%	5.408%	1,647,556	2.183%	11.027%
1950-1959	2,704,017	4.315%	16.926%	332,747	2.633%	5.871%	86,404	56.000%	61.407%	3,123,168	4.139%	15.166%
1960-1969	9,703,905	15.485%	32.411%	3,436,314	27.192%	33.063%	—	—	—	13,140,219	17.414%	32.580%
1970-1979	9,302,808	14.845%	47.256%	2,617,885	20.716%	53.779%	—	—	—	11,920,693	15.798%	48.378%
1980-1989	6,967,932	11.119%	58.375%	1,159,155	9.173%	62.952%	5,616	3.640%	65.047%	8,132,703	10.778%	59.155%
1990-1999	6,958,989	11.105%	69.480%	2,177,273	17.229%	80.181%	17,102	11.084%	76.131%	9,153,364	12.130%	71.286%
2000-2009	13,225,018	21.104%	90.584%	2,058,862	16.292%	96.473%	28,600	18.536%	94.667%	15,312,480	20.293%	91.579%
2010-2013	5,900,712	9.416%	100.000%	445,653	3.527%	100.000%	8,228	5.333%	100.000%	6,354,593	8.421%	100.000%
<b>Total</b>	<b>62,666,534</b>	<b>100.000%</b>		<b>12,637,037</b>	<b>100.000%</b>		<b>154,294</b>	<b>100.000%</b>		<b>75,457,865</b>	<b>100.000%</b>	

Source: Alabama Commission on Higher Education's Fall 2013 Facilities Inventory survey.

# Proportion of Physical Plant By Year of Construction Alabama Public Colleges and Universities Gross Square Feet



Year	Unknown	Pre-1900	1900-1929	1930-1959	1960-1969	1970-1979	1980-1989	1990-1999	2000-2009	2010-2013
Year	1.14%	0.59%	4.74%	8.70%	17.41%	15.80%	10.78%	12.13%	20.29%	8.42%

Source: Alabama Commission on Higher Education's Fall 2013 Facilities Inventory survey.



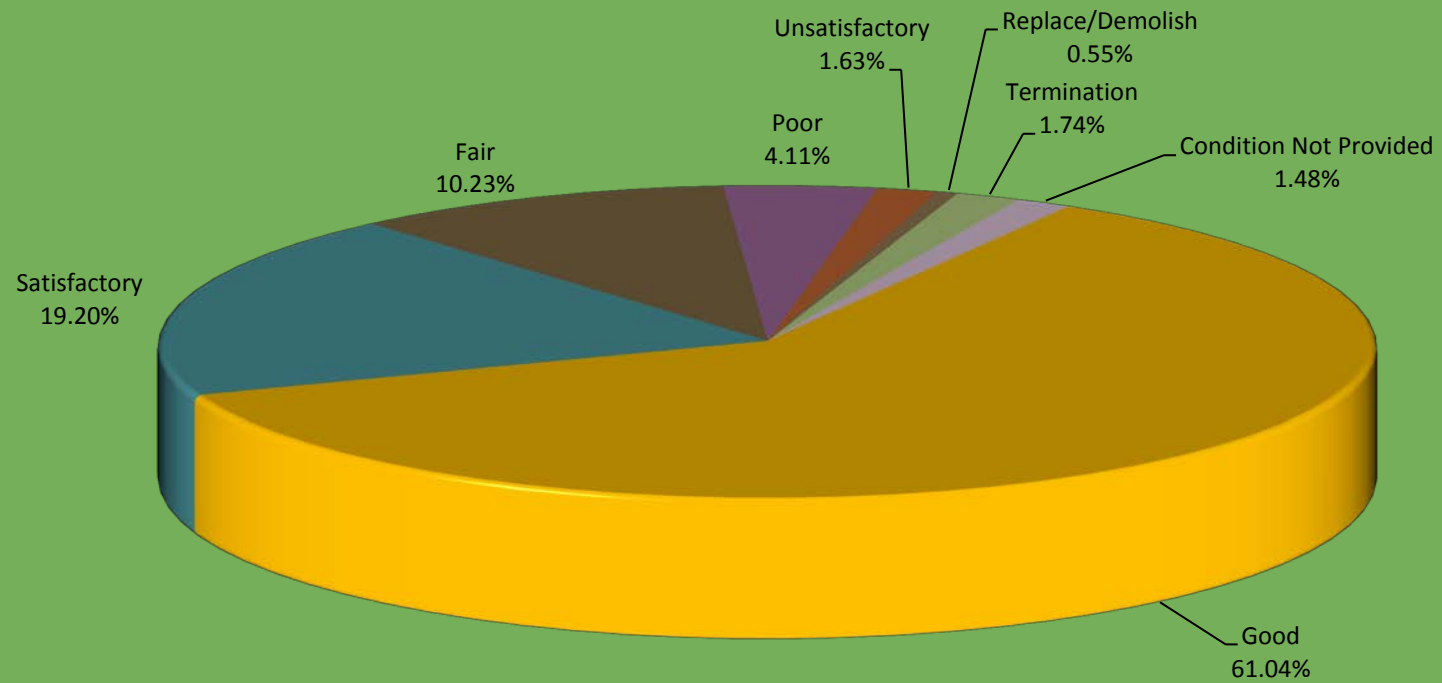
Condition of Buildings  
Alabama Public Colleges and Universities  
Gross Square Feet (GSF)  
Fall 2013

Institution	Buildings in Good Condition (a) Minimal Renovation		Buildings in Satisfactory Condition (b) Limited Renovation		Buildings in Fair Condition (c) Moderate Renovation		Buildings in Poor Condition (d) Significant Renovation		Buildings in Unsatisfactory Condition (e) Major Renovation		Buildings in Replace/Demolish Condition (f)		Buildings in Termination Condition (g)		Condition Information Not Provided		Total GSF
	GSF	% of Total	GSF	% of Total	GSF	% of Total	GSF	% of Total	GSF	% of Total	GSF	% of Total	GSF	% of Total	GSF	% of Total	
Alabama A&M University	1,286,052	57.98%	761,383	34.32%	93,347	4.21%	77,495	3.49%									2,218,277
Alabama State University	2,406,482	89.29%	120,309	4.46%	14,366	0.53%	6,269	0.23%	147,814	5.48%							2,695,240
Athens State University	215,375	55.35%	87,645	22.53%	8,832	2.27%	44,986	11.56%	32,251	8.29%							389,089
Auburn University <sup>(h)</sup>	4,640,040	47.67%	1,507,832	15.49%	730,750	7.51%	364,779	3.75%	129,829	1.33%	336,455	3.46%	948,707	9.75%	1,075,538	11.05%	9,733,930
AU-Vet Med	308,859	55.24%	37,202	6.65%	19,952	3.57%	136,929	24.49%	13,202	2.36%					42,988	7.69%	559,132
Auburn University at Montgomery	602,797	64.07%	289,152	30.73%	48,913	5.20%											940,862
Jacksonville State University	2,232,849	94.37%	92,845	3.92%	3,504	0.15%	15,796	0.67%	21,006	0.89%							2,366,000
Troy University	2,564,897	85.11%	448,870	14.89%													3,013,767
University of Alabama	5,240,807	42.14%	2,083,995	16.76%	2,720,411	21.87%	1,723,045	13.85%	413,508	3.32%	1,970	0.02%	252,673	2.03%			12,436,409
University of Alabama at Birmingham	10,250,992	64.10%	4,181,629	26.15%	1,234,399	7.72%	8,764	0.05%	190,442	1.19%	14,160	0.09%	112,496	0.70%			15,992,882
University of Alabama in Huntsville	2,494,290	86.84%	211,210	7.35%	100,412	3.50%	64,000	2.23%	2,300	0.08%							2,872,212
University of Montevallo	471,368	40.73%	300,498	25.96%	299,075	25.84%	63,472	5.48%	16,748	1.45%	6,248	0.54%					1,157,409
University of North Alabama	486,291	27.12%	191,065	10.66%	1,012,332	56.46%	100,853	5.62%			2,447	0.14%					1,792,988
University of South Alabama	5,066,271	93.12%	333,597	6.13%	8,517	0.16%	32,129	0.59%									5,440,514
University of West Alabama	183,897	17.38%	204,788	19.36%	584,441	55.25%	74,197	7.01%	10,500	0.99%							1,057,823
<b>Total Senior Institutions</b>	<b>38,451,267</b>	<b>61.36%</b>	<b>10,852,020</b>	<b>17.32%</b>	<b>6,879,251</b>	<b>10.98%</b>	<b>2,712,714</b>	<b>4.33%</b>	<b>977,600</b>	<b>1.56%</b>	<b>361,280</b>	<b>0.58%</b>	<b>1,313,876</b>	<b>2.10%</b>	<b>1,118,526</b>	<b>1.78%</b>	<b>62,666,534</b>
Dauphin Island Sealab/MESC	89,182	61.93%	624	0.43%	54,208	37.64%											144,014
Alabama Southern Comm College	215,744	71.04%	9,861	3.25%			78,095	25.71%									303,700
Bevill State Community College	442,022	52.73%	388,934	46.39%	7,362	0.88%											838,318
Bishop State Community College	351,578	59.61%	171,797	29.13%	5,881	1.00%	60,548	10.27%									589,804
Calhoun Community College	709,802	88.80%	75,519	9.45%	14,000	1.75%											799,321
Central Alabama Community College	128,007	29.23%	167,593	38.26%	142,398	32.51%											437,998
Chattahoochee Valley Comm College	185,820	100.00%															185,820
Drake State Community & Technical Coll	69,154	45.04%	35,724	23.26%	31,909	20.78%			16,766	10.92%							153,553
Enterprise State Community College	366,464	83.40%	31,666	7.21%	34,610	7.88%	6,653	1.51%									439,393
Faulkner State Community College	401,297	79.28%	42,253	8.35%	11,169	2.21%			51,450	10.16%							506,169
Gadsden State Community College	529,189	50.82%	430,523	41.34%	17,029	1.64%			49,996	4.80%	14,619	1.40%					1,041,356
Ingram State Technical College	56,058	33.66%	108,844	65.36%					1,625	0.98%							166,527
Jefferson Davis Community College	7,320	2.60%	230,522	81.77%	43,632	15.48%	444	0.16%									281,918
Jefferson State Community College	471,263	51.38%	444,353	48.44%			1,640	0.18%									917,256
Lawson State Community College	396,482	58.81%	240,192	35.63%	37,494	5.56%											674,168
L. B. Wallace Community College	181,103	61.03%	84,828	28.59%	13,873	4.68%	16,943	5.71%									296,747
Marion Military Institute	3,766	1.08%	147,854	42.52%	153,296	44.08%	39,900	11.47%	2,948	0.85%							347,764
Northeast Alabama Comm College	354,444	100.00%															354,444
Northwest-Shoals Community College	495,474	100.00%															495,474
Reid State Technical College	34,539	26.67%	84,822	65.49%	10,159	7.84%											129,520
Shelton State Community College	76,410	11.34%	586,772	87.11%	10,400	1.54%											673,582
Snead State Community College	50,325	16.60%	81,297	26.82%	38,935	12.84%	67,296	22.20%	65,272	21.53%							303,125
Southern Union State Comm College	583,504	92.01%							8,403	1.33%	42,252	6.66%					634,159
Trenholm State Technical College	159,055	60.97%	33,101	12.69%	28,694	11.00%	9,285	3.56%	30,731	11.78%							260,866
Wallace Community College Dothan	26,647	4.90%	208,470	38.35%	186,319	34.27%	109,032	20.06%	13,194	2.43%							543,662
Wallace Community College Hanceville	931,288	100.00%															931,288
Wallace Community College Selma	289,413	87.41%	31,692	9.57%					10,000	3.02%							331,105
<b>Total Two-Year Institutions</b>	<b>7,516,168</b>	<b>59.48%</b>	<b>3,636,617</b>	<b>28.78%</b>	<b>787,160</b>	<b>6.23%</b>	<b>389,836</b>	<b>3.08%</b>	<b>250,385</b>	<b>1.98%</b>	<b>56,871</b>	<b>0.45%</b>					<b>12,637,037</b>
<b>Total All Public Institutions</b>	<b>46,056,617</b>	<b>61.04%</b>	<b>14,489,261</b>	<b>19.20%</b>	<b>7,720,619</b>	<b>10.23%</b>	<b>3,102,550</b>	<b>4.11%</b>	<b>1,227,985</b>	<b>1.63%</b>	<b>418,151</b>	<b>0.55%</b>	<b>1,313,876</b>	<b>1.74%</b>	<b>1,118,526</b>	<b>1.48%</b>	<b>75,447,585</b>

- Notes: (a) Minimal Condition (Good) - Building is suitable for continued use with normal maintenance. Approximate renovation cost less than 5% of building replacement cost.  
 (b) Limited Renovation (Satisfactory) - Building requires restoration to present acceptable conditions. Approximate cost of restoration is 5-15% of building replacement cost.  
 (c) Moderate Renovation (Fair) - Requires updating or restoration. Approximate restoration cost is 16-30% of building replacement cost.  
 (d) Significant Renovation (Poor) - Requires significant updating to restoration. Approximate restoration cost is 31-45% of building replacement cost.  
 (e) Major Renovation (Unsatisfactory) - Requires major restoration with possible need to overhaul building subsystems. Approximate restoration cost is 46-60% of the building replacement cost.  
 (f) Replace/Demolition - Should be demolished because the building is unsafe or structurally unsound, irrespective of the need for space or the availability of funds for a replacement.  
 (g) Terminate - Planned termination or relinquishment of occupancy of the building for reasons other than safety or structural unsoundness, e.g. vacating a leased space.  
 (h) Auburn University line includes gross building area associated with AAES and ACES.

Source: Alabama Commission on Higher Education's Fall 2013 Facilities Inventory survey.

# Condition of Buildings Alabama Public Colleges and Universities Fall 2013



Source: Alabama Commission on Higher Education's Fall 2013 Facilities Inventory survey. (Numbers may not add to 100% due to rounding).

Fall 2013 Land Inventory  
Land Area (Acres)  
Alabama Public Colleges and Universities

Institution	Highly Groomed (Landscaped Grounds)	Semi-groomed & Ungroomed (Unimproved/Park)	Pavements:		Agricultural (Crops, Pasture & Timber)	Out Leased	Total
			Streets & Walks	Parking Lots			
Alabama A&M University							
E&G	367.00	240.00	20.80	34.80	2,200.00		2,862.60
Auxiliary					10.00		10.00
Other							
Subtotal	367.00	240.00	20.80	34.80	2,210.00		2,872.60
Alabama State University							
E&G	83.00	44.00	25.00	18.00	349.00		519.00
Auxiliary	111.00	79.00	8.00	15.00			213.00
Other	15.00						15.00
Subtotal	209.00	123.00	33.00	33.00	349.00		747.00
Athens State University							
E&G	26.04	1.73	1.23	6.71			35.71
Auxiliary	5.54					38.53	44.07
Other	4.05						4.05
Subtotal	35.63	1.73	1.23	6.71		38.53	83.83
Auburn University							
E&G	633.00	594.00	143.00	73.00	7,616.00		9,059.00
Auxiliary	132.00						132.00
Other					18,863.00	76.00	18,939.00
Subtotal	765.00	594.00	143.00	73.00	26,479.00	76.00	28,130.00
Auburn University at Montgomery							
E&G	109.00	362.00	11.00	13.00		10.00	505.00
Auxiliary	8.00			6.00			14.00
Other							
Subtotal	117.00	362.00	11.00	19.00		10.00	519.00
Jacksonville State University							
E&G	88.00	102.00	81.00	61.00	40.00		372.00
Auxiliary	20.00	34.00	13.00	20.00			87.00
Other	3.00	2.00					5.00
Subtotal	111.00	138.00	94.00	81.00	40.00		464.00

Fall 2013 Land Inventory  
Land Area (Acres)  
Alabama Public Colleges and Universities

Institution	Highly Groomed (Landscaped Grounds)	Semi-groomed & Ungroomed (Unimproved/Park)	Pavements:		Agricultural (Crops, Pasture & Timber)	Out Leased	Total
			Streets & Walks	Parking Lots			
Troy University							
E&G	449.00	71.00	44.00	42.00	418.00	9.00	1,033.00
Auxiliary							
Other							
Subtotal	449.00	71.00	44.00	42.00	418.00	9.00	1,033.00
University of Alabama							
E&G	1,102.00	329.00	48.00				1,479.00
Auxiliary	235.60		66.00	187.00			488.60
Other	7.80						7.80
Subtotal	1,345.40	329.00	114.00	187.00			1,975.40
University of Alabama at Birmingham							
E&G	84.00	10.00	33.00	3.00	471.00		601.00
Auxiliary	14.00	4.00	16.00	95.00			129.00
Other	6.00	2.00	3.00	5.00		7.00	23.00
Subtotal	104.00	16.00	52.00	103.00	471.00	7.00	753.00
University of Alabama in Huntsville							
E&G	232.00	36.00	12.00	60.00			340.00
Auxiliary	28.00						28.00
Other	8.00						8.00
Subtotal	268.00	36.00	12.00	60.00			376.00
University of Montevallo							
E&G	94.00	26.00	15.00	11.00			146.00
Auxiliary	66.00	16.00	6.00	8.00	4,182.00		4,278.00
Other							
Subtotal	160.00	42.00	21.00	19.00	4,182.00		4,424.00
University of North Alabama							
E&G	61.00	49.00	13.00	30.00	27.00		180.00
Auxiliary	14.00		2.00	5.00			21.00
Other							
Subtotal	75.00	49.00	15.00	35.00	27.00		201.00

Fall 2013 Land Inventory  
Land Area (Acres)  
Alabama Public Colleges and Universities

Institution	Highly Groomed (Landscaped Grounds)	Semi-groomed & Ungroomed (Unimproved/Park)	Pavements:		Agricultural (Crops, Pasture & Timber)	Out Leased	Total
			Streets & Walks	Parking Lots			
University of South Alabama							
E&G	487.00	276.00	68.00	117.00			948.00
Auxiliary	319.00	221.00	13.00	60.00			613.00
Other	79.00	103.00	22.00	10.00			214.00
Subtotal	885.00	600.00	103.00	187.00			1,775.00
University of West Alabama							
E&G	119.00	146.00	21.00	25.00	180.00	23.00	514.00
Auxiliary							
Other							
Subtotal	119.00	146.00	21.00	25.00	180.00	23.00	514.00
Senior Total							
E&G	3,934.04	2,286.73	536.03	494.51	11,301.00	42.00	18,594.31
Auxiliary	953.14	354.00	124.00	396.00	4,192.00	38.53	6,057.67
Other	122.85	107.00	25.00	15.00	18,863.00	83.00	19,215.85
Subtotal	5,010.03	2,747.73	685.03	905.51	34,356.00	163.53	43,867.83
Dauphin Island Sealab/MESC							
E&G	22.00	28.00	4.00	4.00		2.00	60.00
Auxiliary							
Other							
Subtotal	22.00	28.00	4.00	4.00		2.00	60.00
Alabama Southern Comm College							
E&G	18.35	26.69	5.65	12.25	98.00		160.94
Auxiliary							
Other						2.00	2.00
Subtotal	18.35	26.69	5.65	12.25	98.00	2.00	162.94
Bevill State Technical College							
E&G	199.50		10.00	39.00			248.50
Auxiliary							
Other							
Subtotal	199.50		10.00	39.00			248.50

Fall 2013 Land Inventory  
Land Area (Acres)  
Alabama Public Colleges and Universities

Institution	Highly Groomed (Landscaped Grounds)	Semi-groomed & Ungroomed (Unimproved/Park)	Pavements:		Agricultural (Crops, Pasture & Timber)	Out Leased	Total
			Streets & Walks	Parking Lots			
Bishop State Community College							
E&G	20.00	36.00	7.00	11.00			74.00
Auxiliary							
Other							
Subtotal	20.00	36.00	7.00	11.00			74.00
Calhoun Community College							
E&G	85.00	34.00	13.00	18.00			150.00
Auxiliary							
Other							
Subtotal	85.00	34.00	13.00	18.00			150.00
Central Alabama Community College							
E&G	65.00		8.00	13.00	46.00		132.00
Auxiliary	19.00	15.00	1.00	1.00	220.00		256.00
Other					2.00		2.00
Subtotal	84.00	15.00	9.00	14.00	268.00		390.00
Chattahoochee Valley Comm College							
E&G	5.15	91.49	4.36	2.00			103.00
Auxiliary							
Other							
Subtotal	5.15	91.49	4.36	2.00			103.00
Drake State Community & Tech Coll							
E&G	9.00	15.00	2.36	5.48			31.84
Auxiliary							
Other							
Subtotal	9.00	15.00	2.36	5.48			31.84
Enterprise State Community College							
E&G	87.00	56.00	15.00	34.00			192.00
Auxiliary							
Other							
Subtotal	87.00	56.00	15.00	34.00			192.00

Fall 2013 Land Inventory  
Land Area (Acres)  
Alabama Public Colleges and Universities

Institution	Highly Groomed (Landscaped Grounds)	Semi-groomed & Ungroomed (Unimproved/Park)	Pavements:		Agricultural (Crops, Pasture & Timber)	Out Leased	Total
			Streets & Walks	Parking Lots			
Faulkner State Community College							
E&G	56.00	15.00	5.00	5.00	50.00		131.00
Auxiliary	10.00						10.00
Other							
Subtotal	66.00	15.00	5.00	5.00	50.00		141.00
Gadsden State Community College							
E&G	77.00	72.00	44.00	37.00	139.00	15.00	384.00
Auxiliary							
Other							
Subtotal	77.00	72.00	44.00	37.00	139.00	15.00	384.00
Ingram State Technical College							
E&G	8.00		2.00				10.00
Auxiliary							
Other							
Subtotal	8.00		2.00				10.00
Jefferson Davis Community College							
E&G	114.00	12.00	4.00	11.00	176.00		317.00
Auxiliary	5.00						5.00
Other	5.00					4.00	9.00
Subtotal	124.00	12.00	4.00	11.00	176.00	4.00	331.00
Jefferson State Community College							
E&G	86.00	181.00	9.00	30.00			306.00
Auxiliary							
Other						45.00	45.00
Subtotal	86.00	181.00	9.00	30.00		45.00	351.00
Lawson State Community College							
E&G	74.00	23.00	4.00	7.00			108.00
Auxiliary			1.00	1.00			2.00
Other							
Subtotal	74.00	23.00	5.00	8.00			110.00

Fall 2013 Land Inventory  
Land Area (Acres)  
Alabama Public Colleges and Universities

Institution	Highly Groomed (Landscaped Grounds)	Semi-groomed & Ungroomed (Unimproved/Park)	Pavements:		Agricultural (Crops, Pasture & Timber)	Out Leased	Total
			Streets & Walks	Parking Lots			
L.B. Wallace Community College							
E&G	53.00	62.00	10.00	6.00	41.00		172.00
Auxiliary				1.00			1.00
Other	97.00					1.00	98.00
Subtotal	150.00	62.00	10.00	7.00	41.00	1.00	271.00
Marion Military Institute							
E&G	64.00	14.00	2.00	5.00			85.00
Auxiliary	65.00						65.00
Other							
Subtotal	129.00	14.00	2.00	5.00			150.00
Northeast Alabama Comm College							
E&G	40.00	63.00	5.00	9.00			117.00
Auxiliary							
Other							
Subtotal	40.00	63.00	5.00	9.00			117.00
Northwest-Shoals Comm College							
E&G	105.00		17.00	10.00	78.00		210.00
Auxiliary							
Other							
Subtotal	105.00		17.00	10.00	78.00		210.00
Reid State Technical College							
E&G	14.00	9.00	3.00	1.00			27.00
Auxiliary							
Other							
Subtotal	14.00	9.00	3.00	1.00			27.00
Shelton State Technical College							
E&G	65.00	128.00	3.00	6.00			202.00
Auxiliary							
Other							
Subtotal	65.00	128.00	3.00	6.00			202.00
Snead State Community College							
E&G	24.82	5.40	2.78	10.75			43.75
Auxiliary	2.03	1.41					3.44
Other							
Subtotal	26.85	6.81	2.78	10.75			47.19



Fall 2013 Land Inventory  
Land Area (Acres)  
Alabama Public Colleges and Universities

Institution	Highly Groomed (Landscaped Grounds)	Semi-groomed & Ungroomed (Unimproved/Park)	Pavements:		Agricultural (Crops, Pasture & Timber)	Out Leased	Total
			Streets & Walks	Parking Lots			
Southern Union State Comm College							
E&G	91.06	110.93	2.00	16.32			220.31
Auxiliary	3.30						3.30
Other							
Subtotal	94.36	110.93	2.00	16.32			223.61
Trenholm State Technical College							
E&G	22.00	45.00	7.00	8.00			82.00
Auxiliary							
Other							
Subtotal	22.00	45.00	7.00	8.00			82.00
Wallace Community College Dothan							
E&G	62.00	22.00	9.00	25.00		4.00	122.00
Auxiliary	2.00	4.00	1.00	1.00	149.00		157.00
Other							
Subtotal	64.00	26.00	10.00	26.00	149.00	4.00	279.00
Wallace Comm College Hanceville							
E&G	131.91	79.00	27.00	50.00	7.00		294.91
Auxiliary							
Other							
Subtotal	131.91	79.00	27.00	50.00	7.00		294.91
Wallace Community College Selma							
E&G	14.00	31.00	6.00	12.00			63.00
Auxiliary							
Other						13.00	13.00
Subtotal	14.00	31.00	6.00	12.00		13.00	76.00
Two-Year Colleges Total							
E&G	1,590.79	1,131.51	227.15	383.80	635.00	19.00	3,987.25
Auxiliary	106.33	20.41	3.00	4.00	369.00		502.74
Other	102.00				2.00	65.00	169.00
Subtotal	1,799.12	1,151.92	230.15	387.80	1,006.00	84.00	4,658.99
Total All Public Institutions & MESC							
E&G	5,546.83	3,446.24	767.18	882.31	11,936.00	63.00	22,641.56
Auxiliary	1,059.47	374.41	127.00	400.00	4,561.00	38.53	6,560.41
Other	224.85	107.00	25.00	15.00	18,865.00	148.00	19,384.85
Subtotal	6,831.15	3,927.65	919.18	1,297.31	35,362.00	249.53	48,586.82

Source: Alabama Commission on Higher Education's Fall 2013 Land Inventory survey.